

**Welcome!**  
**County of Lambton**  
**Intersection Improvements at County Road 22**  
**and**  
**County Road 8 Detail Design**  
**Public Consultation Centre**



November 25, 2024

# Welcome!

## County of Lambton

### Intersection Improvements at County Road 22 and County Road 8 Detail Design Public Consultation Centre



Should you have any questions regarding the project, please contact the County or Consultant Project Managers listed below.

Several background reports are available to supplement the information shown in the exhibits. Should you have any questions regarding the materials or any other aspect of the study, please contact the following by December 6, 2024.

Steve Taylor  
Consultant Project Manager  
Email: [stevenj.taylor@bteng.ca](mailto:stevenj.taylor@bteng.ca)  
Phone: 519-672-2222  
Toll Free: 1-866-218-1001

Matt Deline, P.Eng.  
Manager, Public Works  
County of Lambton  
789 Broadway Street, Box 3000  
Wyoming, ON N0N 1T0  
Email: [Matt.Deline@county-lambton.on.ca](mailto:Matt.Deline@county-lambton.on.ca)  
Phone: 519-845-0809 ext. 5370

There is an opportunity at any time for interested persons to provide written input. Any comments received will be collected under the *Municipal Freedom of Information and Protection of Privacy Act* (2009) and, with the exception of personal information, will become part of the public record.

# Purpose of Public Consultation Centre (PCC)

The purpose of this event is to engage the public/stakeholders on their perspectives and interests in the project. The project will proactively involve the public, stakeholders and Indigenous Peoples.

The public consultation process ensures that anyone with interest in the project can provide input.

The following exhibits will display:

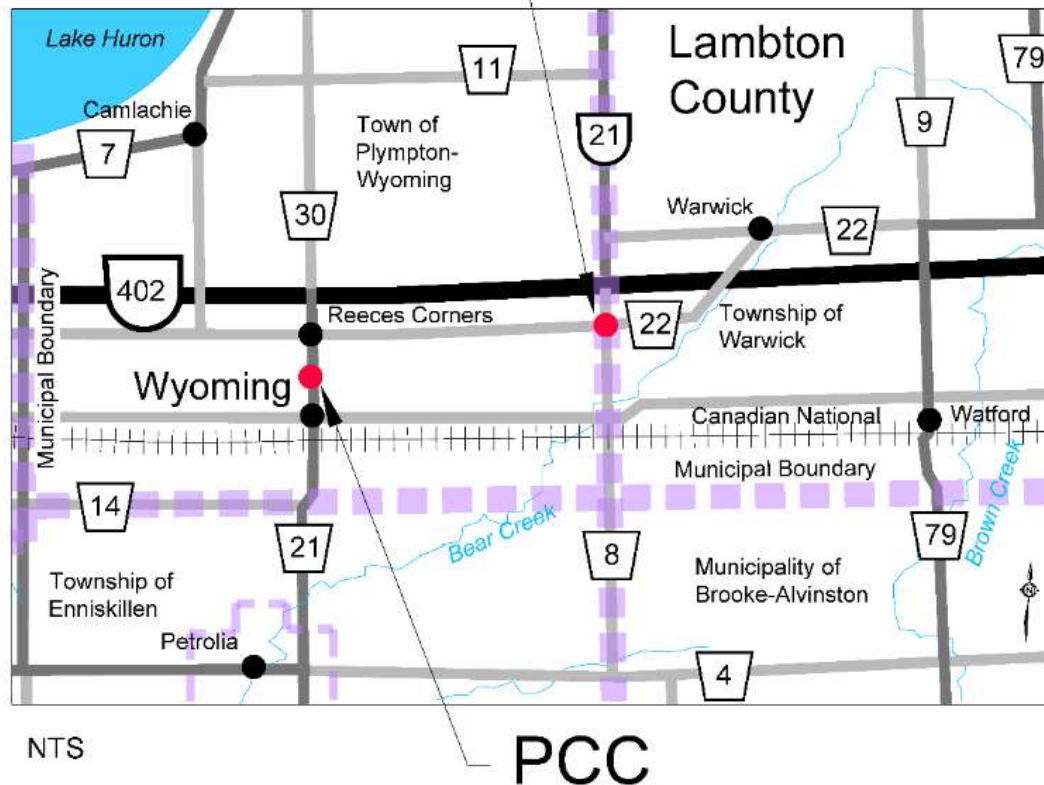
- The project introduction and Need and Opportunity for the Project.
- A summary of work completed to date.
- A description of the existing conditions in the area.
- Next Steps.

# Introduction

The County of Lambton has retained BT Engineering Inc. to complete the Detail Design for improvements to the County Road 22 (London Line) and County Road 8 (Forest Road) intersection located on the municipal boundary between the Town of Plympton-Wyoming and the Township of Warwick, Ontario. The design includes a roundabout to improve the operation and safety of the existing intersection.

The project location for this intersection is shown below.

## Project Location



# Need and Justification

An intersection control study at County Road 22 and County Road 8 of the existing roadway geometry, traffic volumes, and collision history was prepared to assess traffic operations and safety performance of the existing two-way stop control intersection. Possible intersection control treatments (i.e. ALL-WAY STOP control, signalization, & roundabout), their projected traffic capacity, safety performance, and construction costs were compared as part of the study.

A single lane roundabout was recommended as the preferred alternative at the intersection of County Road 22 and County Road 8.

Roundabouts offer several benefits over more conventional intersection control including the following:

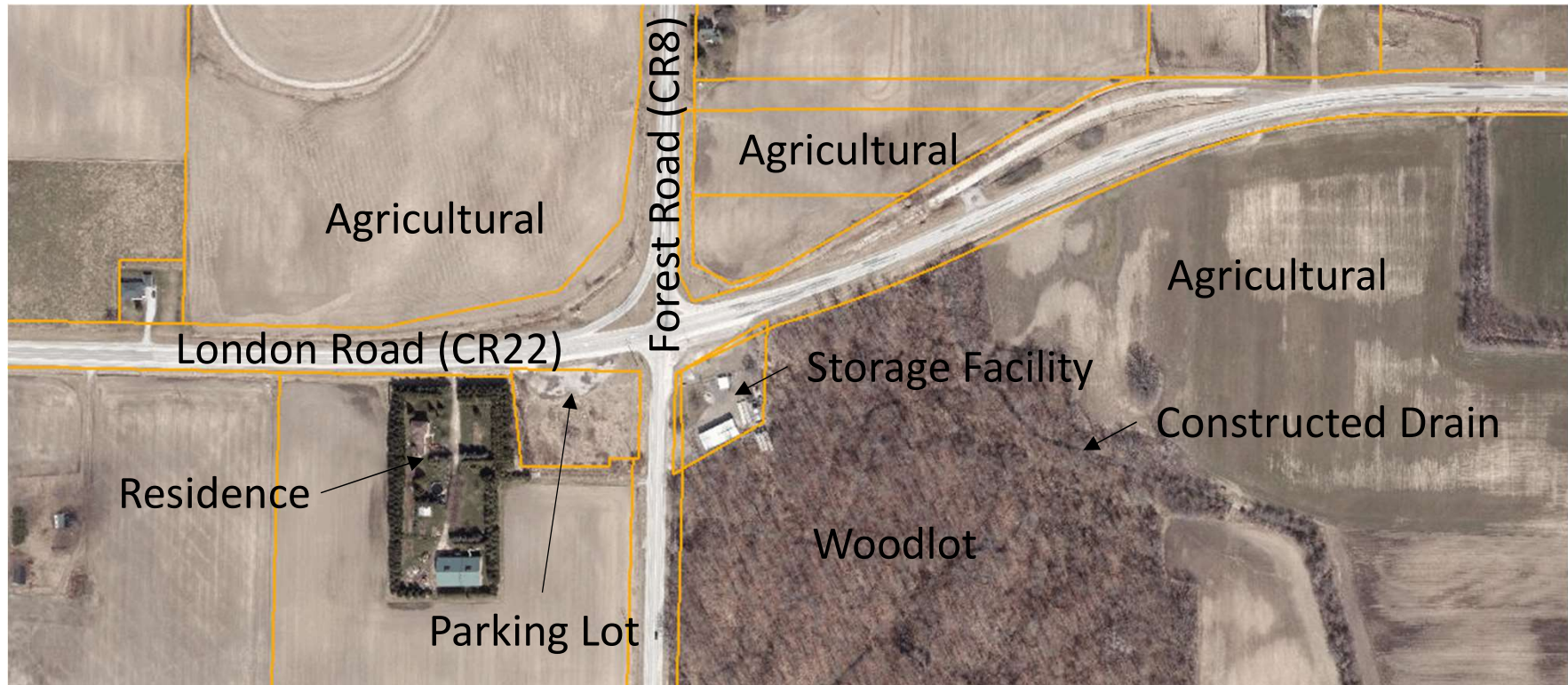
- Reduced number of conflict points;
- Reduced collision frequency and severity;
- Reduced travel speeds reduces collision severity;
- Improved intersection capacity;
- Environmental benefits (i.e., reduced vehicle idling, vehicle noise, fuel consumption, emissions, etc.);
- Accommodates the Emergency Detour Route for Highway 402 closures.

Disadvantages of roundabouts include the following:

- require additional property beyond the current road allowance; and
- higher construction cost when compared to other intersection control options.



# Existing Conditions



NTS 

# Existing Traffic:

- London Line (CR 22) and Forest Road (CR 8) each carry an average of up to 2500 vehicles / day, well within the capacity of a single lane roundabout
- The vehicles include cars, trucks, farm machinery and bicycles
- Approximately 15% of the traffic is heavy trucks
- As Emergency Detour Routes (EDR) London Line and Forest Road must also accommodate peaks in traffic whenever Highway 402 is closed



# Photo Inventory



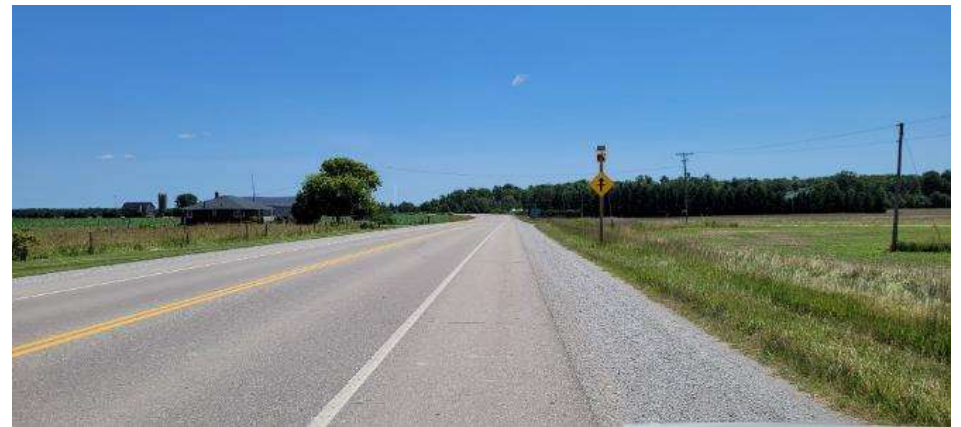
Forest Road (CR 8) looking southwest towards to westbound ramp to London Road



Looking east on London Road (CR 22) towards the intersection



Forest Road Looking south towards the London Road intersection



London Road Looking east towards the Forest Road intersection



# Proposed Detail Design

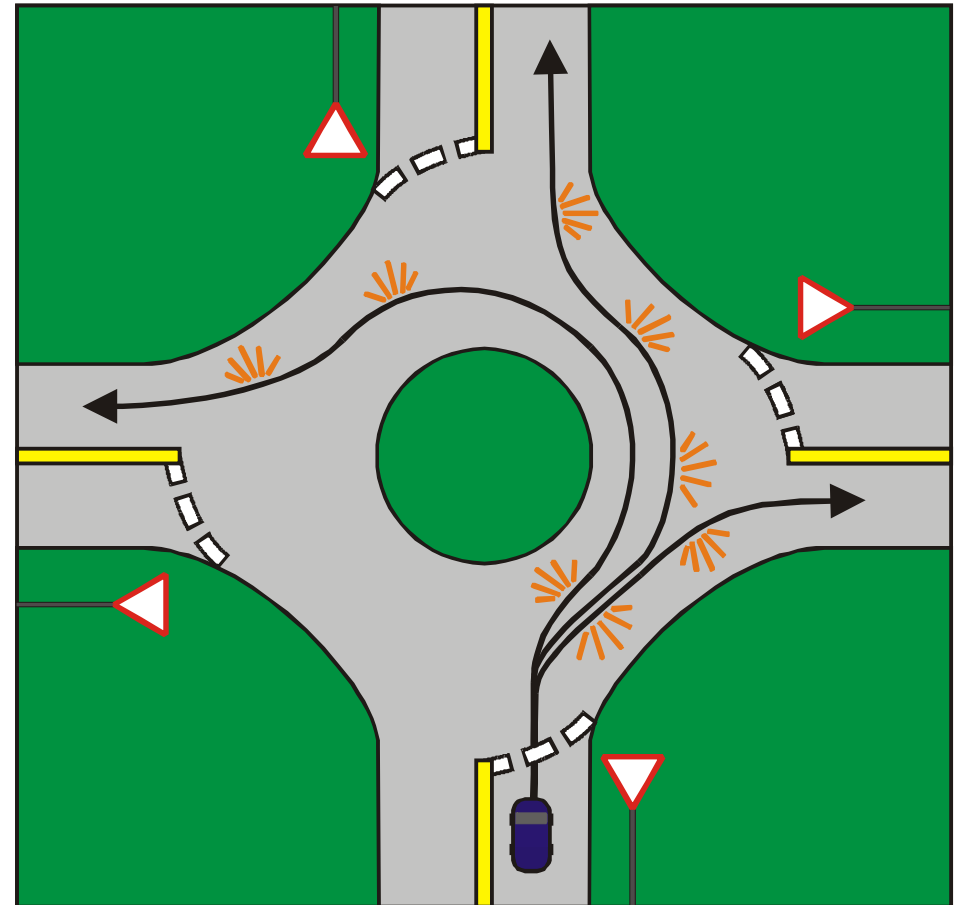


# Roundabout Driving Tips

- Slow down as you approach the roundabout.
- View roundabout intersection sign to plan exit leg of roundabout.
- Watch and yield to pedestrians crossing the roadway when approaching or exiting a roundabout.
- Traffic in the roundabout has the right-of-way (treat roundabout as a one-way street).
- Do not stop within roundabout.
- Always signal your exit.

# Position and Signalling within the Roundabout

1. Drivers must signal to turn right.
2. Drivers must signal to exit the roundabout.
3. Drivers must signal to change lanes and should check their rear-view mirror and blind spot.
4. When travelling past two or more exits on the roundabout drivers can use a courtesy left-hand signal.



# Effects and Mitigation

Factor	Environmental Issues and Potential Effects	Preliminary Design Proposed Mitigation Measures
Traffic Operations - Delay	Potential for traffic travel delays associated with construction staging.	Provide advance notice of all closures/lane reductions/detours.  Prepare/implement Traffic Management Plan during construction.
Emergency Services	Potential impact to emergency service routes/access due to closures / lane reductions.	Prepare/implement Traffic Management Plan during construction.  Ensure ongoing and advance communication with emergency service providers during construction.
Property Impacts - Permanent	Property acquisition for intersection improvements.	Early communication/coordination with owner(s) and tenants to minimize disruption associated with property purchase.  Compensation for lands and decommissioning of wells if required.
Aesthetics	Roundabouts provide opportunities to enhance aesthetics.	Provide a landscape plan which includes low maintenance, draught tolerant plantings.

# Effects and Mitigation

Factor	Environmental Issues and Potential Effects	Preliminary Design Proposed Mitigation Measures
Archaeology	Potential damage to or loss of archaeological artifacts.	<p>If deeply buried archaeological remains are encountered during construction, construction will be stopped in the vicinity of the discovery and the Contractor must notify the Ministry of Heritage, Sport, Tourism and Culture Industries.</p> <p>Indigenous Peoples communities will be contacted during the construction phase.</p>
Noise (Construction)	Noise from construction equipment and vehicles during construction.	Maintain equipment in good operating condition to prevent unnecessary noise. Restrict idling of equipment to the minimum necessary to perform the work. Contractor will be required to abide by noise control by-laws for day-to-day operations.
Management of Excess Materials	The project will result in the generation of waste asphalt, granulars, concrete and possibly earth materials.	Excess generation will be minimized through promoting contractor salvage, recycling and re-use in the contract tender documents.
Species at Risk	Potential disruption to migratory birds, nesting and/or species at risk (SAR).	<p>Conduct site 'sweeps' prior to any tree removals and prior to and during construction.</p> <p>Clear any vegetation outside of the breeding bird season.</p> <p>Ensure Contractor's staff are trained to recognize potentially affected species and are required to notify authorities if any are encountered on site.</p>

# Effects and Mitigation

<b>Factor</b>	<b>Environmental Issues and Potential Effects</b>	<b>Preliminary Design Proposed Mitigation Measures</b>
Utilities	Potential for impacts to existing utilities.	Ensure advance coordination with utility companies and approval for all utility relocations/protections.
Drainage	Potential for impacts to drainage.	Maintain existing quality and quantity of stormwater treatment. Ensure tile drainage systems are accommodated.

# Recommended Design

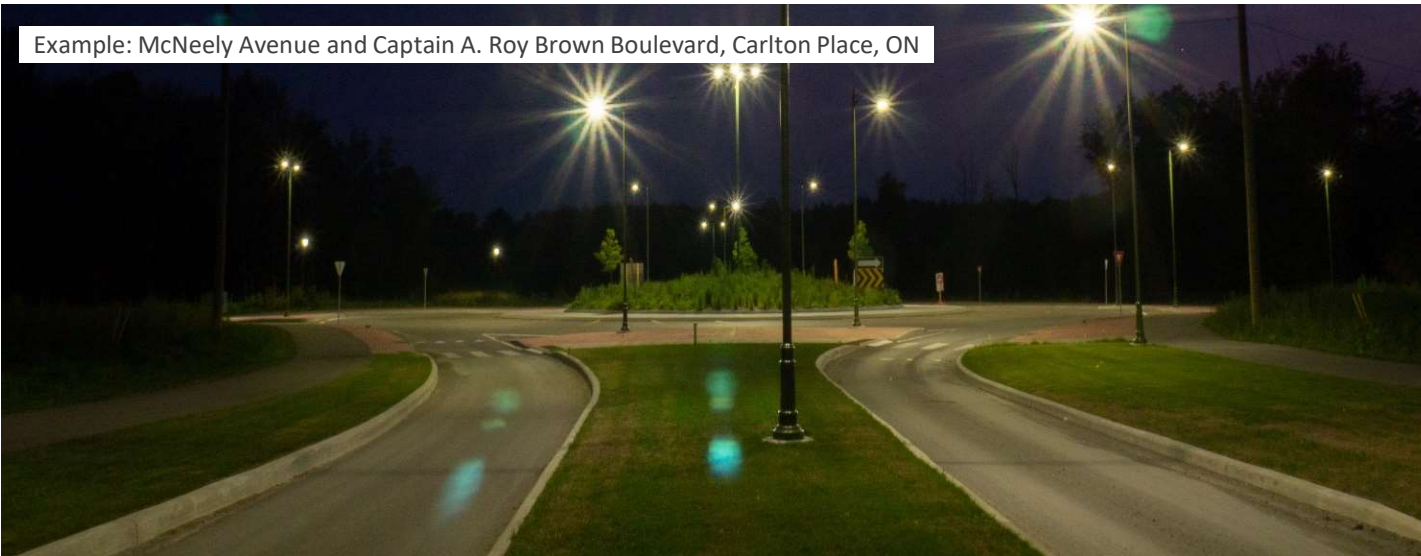


BTE 24-026  
2024-11-06  
NTS

Lambton Roads 8 and 22 Intersection Improvements  
Preliminary Roundabout Design



Example: McNeely Avenue and Captain A. Roy Brown Boulevard, Carlton Place, ON



Example: County Road 28, Russell Township, ON



## Design Features:

- LED lighting (during nighttime and low-light conditions) for enhanced visibility and to provide safe navigation.
- Single-lane layout provides a simple and intuitive design.
- Directional splitter islands and curb and clear signage for vehicle guidance.
- Aesthetic and prominent center island décor with low-maintenance vegetation.



# Next Steps

## Following this meeting:

- All PCC comments and ideas will be reviewed
- The Design will be finalized considering those comments
- The County will proceed with Property Acquisitions

## How can you remain involved in the Project?

- Request that your name/e-mail be added to the mailing list
- Provide a comment
- Contact the Project Managers at any time (contact information is shown below)

Steve Taylor  
Consultant Project Manager  
Email: [stevenj.taylor@bteng.ca](mailto:stevenj.taylor@bteng.ca)  
Phone: 519-672-2222  
Toll Free: 1-866-218-1001

Matt Deline, P.Eng.  
Manager, Public Works  
County of Lambton  
789 Broadway Street, Box 3000  
Wyoming, ON N0N 1T0  
Email: [Matt.Deline@county-lambton.on.ca](mailto:Matt.Deline@county-lambton.on.ca)  
Phone: 519-845-0809 ext. 5370

**Thank you for your participation in this PCC.** Your input into this project is valuable and appreciated. Please submit any questions or comments to the contacts listed above by **December 6, 2024.**

All information is collected in accordance with the *Municipal Freedom of Information and Protection of Privacy Act*.